

** Pickups in Mitchell, Sioux Falls, & the Coffee Cup Truck Stop (Vermillion exit) **

Visit www.ncl.com/shore-excursions to see available shore excursions. Pre-book by logging in or creating an online account or by calling the Norwegian Excursion line at 866-625-1167.

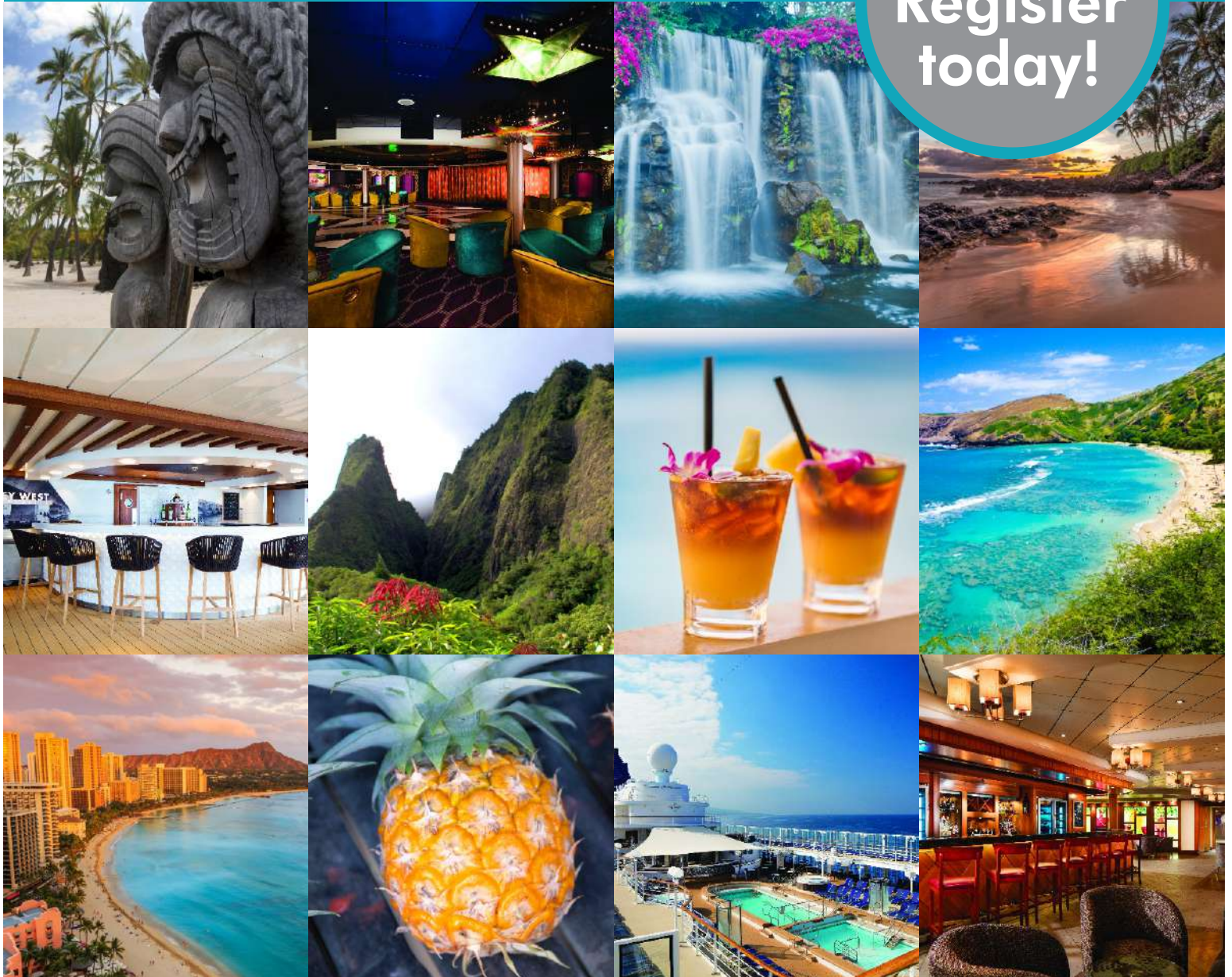


NORWEGIAN PRIDE OF AMERICA HAWAII CRUISE

February 21-March 3, 2024

Discover the beauty of the Hawaiian Islands with two nights in Honolulu and a seven-night cruise aboard the *Pride of America*! Immerse yourself in the rich culture, incredible landscapes, and delicious cuisine of Hawaii's islands each day – from the lush, fragrant vegetation of Kauai to the Big Island's dramatic volcanoes and the famous surfing beaches of Oahu. Overnight stays in Maui and Kauai offer even more time to discover the best of island living!

Space is limited.
Register today!





DAY 1 WEDNESDAY, FEBRUARY 21**OMAHA, NE**

Today we will drive to **Omaha** and check in to our overnight accommodations. Relax and enjoy the evening at your leisure.

DAY 2 THURSDAY, FEBRUARY 22**HONOLULU, OAHU**

Early this morning we will transfer to the airport for our flight to **Honolulu**. Upon arrival in Hawaii, we will settle into our hotel on Waikiki Beach and grab dinner on our own.

DAY 3 FRIDAY, FEBRUARY 23**HONOLULU, OAHU**

The day is yours to explore Honolulu at your leisure. This Pacific crossroads features museums, dazzling beaches, and an abundance of history. Nature enthusiasts will love venturing to Hanauma Bay to do some snorkeling, hiking up Diamond Head to take in the panoramic views, or visiting the Honolulu Zoo or Waikiki Aquarium. Dive into the culture at the bustling market in Chinatown, step back in time with a visit to Iolani Palace built by King Kalakaua in 1879, or simply relax on Waikiki Beach.

DAY 4 SATURDAY, FEBRUARY 24**HONOLULU, OAHU****(Dinner)**

After breakfast at the hotel, we will depart on a **Honolulu city tour** with a stop at **Pearl Harbor**. We'll begin at the Visitor Center to watch a short film on the attack and then board a boat for the ride to the floating memorial built on the sunken hull of the USS *Arizona* (*boat ride to floating memorial subject to availability*). At 8:06 a.m. on December 7, 1941, the *Arizona* was hit by a 1,760-pound bomb that sank the battleship in nine minutes and killed 1,177 crewmen. A marble wall in the shrine room of the memorial exhibits the names of the men who lost their lives that day. After this poignant reminder of the tragedy of war, we will continue on to the pier to board our ship, the **Norwegian *Pride of America***, and explore our home for the next seven nights.

DAY 5 SUNDAY, FEBRUARY 25**KAHULUI, MAUI****(Breakfast, Lunch, Dinner)**

As Maui's only deepwater port, **Kahului** is a bustling harbor. Yet just minutes away are some of this island's most scenic spots. Tourist favorites on Maui include the Hana Highway, Haleakala National Park, Iao Valley, and the historic town of Lahaina where there are dozens of boutiques, shops, restaurants, and historical sites to explore! The narrow and curvy Hana Highway stretches along the coast from Kahului to Hana through the tropical rainforest and over fifty-nine bridges. An optional shore excursion is available that will have you marveling at the lava cliffs, tumbling waterfalls, rugged coastline, and lush hillsides laden with tropical fruit along this famous roadway. Other possible excursions include visiting a pineapple plantation, whale watching, or heading to Lahaina. Our overnight here gives you the perfect opportunity to explore this paradise island at your leisure.

DAY 6 MONDAY, FEBRUARY 26**KAHULUI, MAUI****(Breakfast, Lunch, Dinner)**

A surplus of natural splendor and the genuine hospitality of its people have helped make Maui the second-most popular Hawaiian island. On our second day on Maui, relax on a pristine beach or check out the island's massive Haleakala volcano on an optional excursion. Haleakala means "house of the sun," and legend has it that the demigod Maui lassoed the sun from the summit of the volcano to make the day last longer. The journey from sea level to the top of this 10,000-foot volcano is certainly a scenic one, and there are opportunities to make the journey at sunrise for an even more spectacular view! Other shore excursions include a food tour or snorkeling near coral reefs teeming with tropical fish and the occasional turtle.

DAY 7 TUESDAY, FEBRUARY 27**HILO, HAWAII****(Breakfast, Lunch, Dinner)**

The entire city of **Hilo** is like one giant greenhouse with spectacular tropical flowers at every turn. The town's well-preserved historic buildings date back to the turn of the century and showcase Hawaii's unique architecture. The island of Hawaii is home to Volcanoes National Park which encompasses two of the world's most active volcanoes – Kilauea and Mauna Loa. Consider joining an excursion into the park for a firsthand look at the impact the recent eruption of Kilauea has had on the landscape and the lives of the people that live here. There are plenty of opportunities to admire the island's breathtaking waterfalls, and the many products that flourish in the volcanic soil are certainly worth exploring. Farms and wineries growing coffee, macadamia nuts, grapes, tropical fruits, and herbs and spices all welcome visitors on various optional shore excursions.



Kona coffee cherries



Nawiliwili

DAY 8 WEDNESDAY, FEBRUARY 28

KONA, HAWAII

(Breakfast, Lunch, Dinner)

Kona offers the quintessential Hawaiian experience. Here, Mauna Loa blocks the wind resulting in calm and crystal clear waters perfect for a variety of surf-side fun. Snorkel amongst a kaleidoscope of tropical marine life, head out to deeper waters for some deep-sea fishing, or embark on a glass-bottom boat reef tour. Plenty of history awaits in Kona as well. Explore the life and legacy of King Kamehameha, hike to ancient temples and petroglyphs, and learn about the influence of Catholic missionaries and the sacred Hawaiian laws known as kapu. Other fun opportunities include learning about the growth and processing of coffee and chocolate, hiking amidst the sparkling waterfalls and tropical foliage, and exploring an endangered cloud forest.

DAY 9 THURSDAY, FEBRUARY 29

NAWILIWILI, KAUAI

(Breakfast, Lunch, Dinner)

Named after the wiliwili trees that once lined its picturesque harbor, the lovely port of **Nawiliwili** is the gateway to what many believe to be Hawaii's most beautiful island. On "The Garden Island" nature is truly the star, from the dramatic mountains of Kokee to the cool rainforests of Haena. Optional excursions include kayaking or a journey to Waimea Canyon. This breathtaking gorge is one of the island's most dramatic natural attractions. We will be overnighing in Kauai, which will allow you to attend a luau if you would like. Hulas, fire dances, and a delicious meal are a uniquely Hawaiian experience!

DAY 10 FRIDAY, MARCH 1

NAWILIWILI, KAUAI

(Breakfast, Lunch, Dinner)

Spend the morning relaxing on the ship or exploring more of the island. Our ship will set sail for Honolulu this afternoon. There are countless opportunities on board for shopping and entertainment. Shop the island-inspired jewelry at Na Hoku, relax during a massage at the spa, or take a dip in one of the pools. On *Pride of America* a great drink spot is never far away. Saddle up and wet your whistle at the Gold Rush Saloon, settle in with a Mai Tai or Polynesian at the Waikiki Bar, or sip a great glass of wine at the Napa Wine Bar. Plus, the restaurants will not disappoint! Savor fresh noodles and wok-fried dishes at East Meets West; dig into burgers, wings, and milkshakes in the classic car-themed Cadillac Diner; enjoy premium cuts at Cagney's Steakhouse; or indulge in delicious Italian fare at La Cucina.

DAY 11 SATURDAY, MARCH 2

HONOLULU, OAHU

(Breakfast, Lunch)

We end our cruise this morning in Honolulu. We'll get one more glimpse of this tropical paradise on a **North Shore tour** with lunch before our overnight flight home.

DAY 12 SUNDAY, MARCH 3

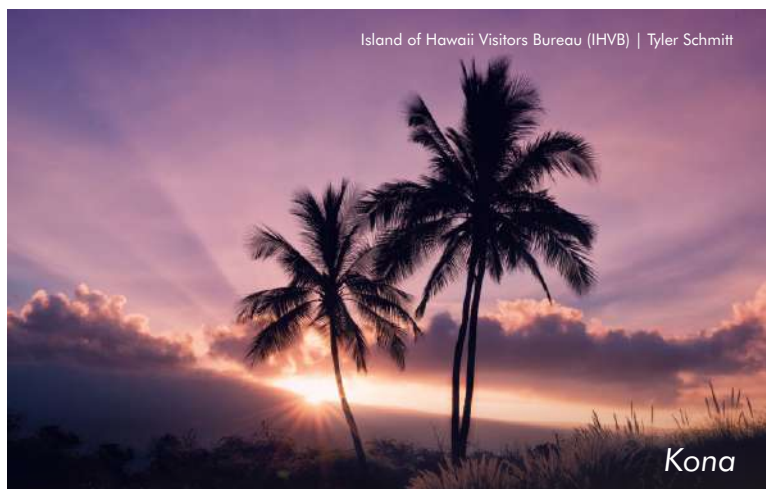
HOME

We arrive early this morning and transfer home with wonderful memories that will last a lifetime!



Island of Hawaii Visitors Bureau (IHVB) | Paul Zizka

Hilo



Island of Hawaii Visitors Bureau (IHVB) | Tyler Schmitt

Kona



INCLUSIONS

- Round-Trip Airport Transfers
- Round-Trip Air to Honolulu (air allowance of \$1,100)
- Private Motorcoach Transportation to Hotel/Pier & on Honolulu/North Shore Tours
- 3 Nights' Accommodations on Land
- All Onboard Meals
- 7-Night Cruise in Stateroom Category of Choice
- Taxes & Gratuities for Included Services
- Porter Service of One Bag Per Person at Hotels
- Professional Tour Manager
- Specialty Dining Package on Board (2 nights' dining in specialty restaurants; includes gratuities)
- Ultimate Beverage Package on Board (all drinks under \$15; includes gratuities. Please note: while in port, drinks are subject to Hawaii sales tax which is not included in the price of the tour)
- Balcony Guests Also Receive:
 - A \$50 Shore Excursion Credit Per Stateroom, Per Port
 - A 250-Minute Internet Package

Not included in the price of this tour: meals other than those listed on the itinerary, beverages other than tea/coffee/water with included meals on land, Hawaii sales tax for drinks while in port, onboard drinks over \$15, items of a personal nature/souvenirs, personal services on board such as spa or hair-styling, shore excursions, excursion driver/guide gratuities, phone calls and faxes from hotels/ship, travel protection plan, fees related to any COVID-19 requirements for this destination, current baggage fees at the airport as assessed by the airline, and any service not listed in the above inclusions.

Activity Level: Minimal to Moderate

In order to participate in this tour, **you must:**

- Be able to walk/stand 2-3 hours at a time at an easy pace in all weather conditions
- Be able to maneuver some stairs, inclines, and uneven surfaces without assistance

DOCUMENTATION: A current government-issued photo ID is required for this trip. **Effective May 7, 2025: All travelers on domestic flights must have a Real ID-compliant form of identification to board. Driver's licenses with a star inside a gold circle in the upper corner are Real ID-compliant, as are passports. You can apply to get a compliant ID by visiting your local DMV.**

OPTIONAL TRAVEL PROTECTION PLAN: CorTrust Bank recommends that you purchase a Travel Protection Plan to help protect you and your travel investment against the unexpected so you can relax and enjoy your trip. Participants may purchase this coverage from the provider of your choice. For your convenience, we offer a Travel Protection Plan, 360° Group Premier provided by Travellex Insurance Services, that helps provide coverage for trip cancellation/interruption, trip delay, baggage loss, theft or damage, medical expense and emergency evacuation coverage, and more. For more information, please see the product flyer included with this brochure. If you would like to purchase the offered plan, please check the applicable box on the registration form. Please Note: The plan cannot be purchased after final payment. To view/download the Policy, which provides the full coverage terms and details, including limitations and exclusions, go to: <https://policy.travelexinsurance.com/GPZ-1023>. To view state specific fraud warnings, visit: <https://www.travelexinsurance.com/company/fraud-warning>. The purchase of this product is not required in order to purchase any other travel product or service. Your travel retailer might not be licensed to sell travel insurance and will only be able to provide general information about the product. An unlicensed travel retailer may not answer questions about the terms and conditions of the insurance offered and may not evaluate the adequacy of your existing insurance coverage. The products being offered provide insurance coverage that only applies during your covered trip. You may have insurance coverage from other sources that provide similar benefits but may be subject to different restrictions depending upon the coverage. You may wish to compare the terms of the travel policy offered through Travellex with any existing life, health, home, and automobile insurance policies you may have. If you have questions about your coverage under your existing insurance policies, contact your insurer or insurance agent or broker. Travellex Insurance Services, Inc. CA Agency License #0D10209. Travel Insurance is offered on behalf of and under the direction of Travellex Insurance Services. Insurance coverages underwritten by individual member companies of Zurich in North America, including Zurich American Insurance Company (NAIC #16535).

CANCELLATION: Full refund of all monies is made if cancellation is received in writing to CorTrust Bank prior to final payment. A 100% fee is charged if the cancellation occurs between final payment and departure. If the reason for cancellation is due to a medical or other reason that is covered by Travel Protection, you may be eligible for reimbursement for such fees from your Travel Protection Plan provider.

TRAVELERS WITH SPECIAL NEEDS: You must advise Star Destinations, Inc. (SDI) at the time of registration of any disability requiring special attention. SDI will make reasonable efforts to accommodate the special needs of travelers. The Americans with Disabilities Act is applicable only in the U.S., and accommodations outside the U.S. may be more limited. Travelers requiring assistance are required to be accompanied by a companion who is capable of, and totally responsible for, providing the assistance. Neither SDI personnel nor its suppliers may lift or physically assist with travelers' special needs including, but not limited to, walking, dining, or other routine activities. Travelers thinking they may need assistance should call SDI to determine what accommodations may reasonably be provided. Arrangements at an additional cost are the financial responsibility of the traveler.

TERMS & CONDITIONS: Star Destinations, Inc. (SDI) acts as an agent for suppliers such as airlines, hotels or activities to provide you with the travel services and accommodations. Although great care is taken in choosing suppliers, we are unable to control them and therefore cannot be held responsible or liable for their acts or omissions. Should a contracted supplier be unable to perform required services, SDI reserves the right to substitute advertised services with similar services. SDI is not responsible for any claims, losses, damages, costs or expenses arising out of injury, accident or death, damage, loss, trip delay or delay of baggage, or other inconvenience resulting from mechanical breakdowns, fire, theft, civil disturbances, government actions, weather, and other factors beyond our control. In the case of a pandemic or worldwide disturbance that interrupts or cancels your planned tour, SDI will do everything possible to retrieve any refundable components of your tour but cannot be held responsible for any non-refundable portions of the tour. In addition, SDI reserves the right to vary the tour price advertised or printed to cover any increase in air fare, volatile fuel prices, government taxes and charges, exchange rate fluctuations, or other tour-related tariffs or newly announced travel costs. In the current travel environment, pricing may be increased due to unexpected requirements for health and safety of tour members. Due to infectious diseases, including COVID-19, destination areas may implement restrictions and requirements that may add additional costs beyond our control. Be aware that any public interaction carries a risk of exposure to infectious diseases. Travelers assume personal risk upon tour registration, and SDI cannot be held responsible in the event of infectious disease exposure. If you request a variation or change to your booking, SDI may choose to accept or reject that request. If accepted, you are responsible for any fees associated with it. If the minimum number of passengers required to operate the tour is not met, SDI reserves the right to cancel the tour.

It is the sole discretion of SDI to refuse transport to any passenger, or require any passenger to leave the tour, if it is reasonably believed that the passenger (1) is dangerous to others or to himself or herself; (2) is engaged in, or is threatening to engage in behavior that may adversely affect the safety, security, enjoyment, or well-being of other passengers, including behavior that is disruptive, verbally or physically abusive, obnoxious, harassing, or obscene; or (3) has failed or refused to follow SDI's rules and procedures or the instructions of its representatives. In the event a passenger is removed, such passenger may be left at any location without any liability to SDI or its representatives. SDI shall not be required to refund any portion of the price paid by any passenger who is removed, nor shall SDI be responsible for any further expenses incurred by the passenger. SDI shall be entitled to recover from the passenger any costs or expenses incurred by SDI or its representatives in the removal of the passenger or the exercise or enforcement of this clause.

TOUR PRICING

Per Person
Double Occupancy

(4 available)	Inside Stateroom (132-219 sq ft)*	\$6,089
(23 available)	Balcony Stateroom (178-285 sq ft)*	\$6,909

Single pricing available upon request.

*Staterooms subject to availability at time of registration.

OPTIONAL TRAVEL PROTECTION

CorTrust Bank RECOMMENDS all travelers purchase a Travel Protection Plan. For your convenience, we offer a Travel Protection Plan provided by Travellex Insurance Services.

See the included Travellex Insurance Services flyer for pricing. (Payment may be sent with your deposit or with final payment to CorTrust Bank)

Travel Protection Plan may be purchased any time before or with final payment to CorTrust Bank.

Travel Insurance is underwritten by Zurich American Insurance Company, (NAIC #16535). Any person who knowingly presents a false or fraudulent claim for payment of a loss or benefit or knowingly presents false information in an application for insurance is guilty of a crime and may be subject to fines and confinement in prison. To view state specific fraud warnings, visit: <https://www.travelexinsurance.com/company/fraud-warning>. Travellex Insurance Services Inc. ("Travellex Insurance") maintains an updated list of alerts and financial defaults on its website available at <https://www.travelexinsurance.com/customer-service/travel-alerts/travel-supplier>.

Travellex Insurance Services, Inc. CA Agency License #0D10209. Insurance coverages underwritten by individual member companies of Zurich in North America, including Zurich American Insurance Company (NAIC #16535).

A \$500 deposit per person is required with your registration form in order to reserve your spot.

**FINAL PAYMENT IS DUE:
OCTOBER 10, 2023**

To register online, visit:

www.stardestinations.com/travel-clubs

Password: corclubSD

For further information or questions, please contact:
Cindy Torgerson – Mitchell/Sioux Falls Area
CorTrust Bank CorClub Executive Director
719 N Main St, Mitchell, SD 57301
(605) 996-5910
ctorgerson@cortrustbank.com

Custom designed
tour by





Complimentary Dining

Cadillac Diner

Pull up a chair at this casual diner and order from a diverse selection of comfort foods, including burgers, chicken wings, milkshakes and more. Experience a slice of Americana, including classic American cars, with every bite.



Aloha Café

Whatever you're craving, chances are you will find it at the Aloha Café. This indoor buffet restaurant serves up breakfast, lunch and dinner.



East Meets West

Enjoy this Asian restaurant featuring freshly prepared noodles, delicious wok fried dishes, authentic soups and more.



Key West Bar & Grill

Enjoy casual dining to suit every taste. From grilled burgers to hot dogs, come as you are and eat as you like after a night out or before your day begins.



Liberty Restaurant

One of the two Main Restaurants serving a variety of culinary delights with a contemporary flair.



Skyline Restaurant

Stunning in design with ocean views, this Main Restaurant offers traditional cuisine to please every palate.



Specialty Dining

Moderno Churrascaria

This authentic Brazilian churrascaria is a must. Start with an impressive salad bar, but save plenty of room for slow-roasted meats carved tableside by Passadores.



La Cucina

Buona Sera! Enjoy the finest ingredients at this vibrant Italian ristorante. Dine on Italian classics and indulge with a rich homemade Tiramisu.



Sushi

In the mood for sushi? Take a seat at this contemporary sushi bar for some traditional Japanese culinary bites.



Cagney's Steakhouse

Premium cuts are the standard at this American steakhouse serving Certified Angus Beef®. Sip your favorite cocktail and don't forget to order the famous Parmesan dusted truffle fries!



Jefferson's Bistro

Romance is in the air at this signature French restaurant. Elegant interiors, crisp white linens and attentive servers make this an intimate dining experience. By the end of your meal, you might just be proclaiming c'est magnifique!



Teppanyaki

The sizzles and surprises never cease at this authentic Japanese restaurant. Sit around a lively shared table as a skillful chef slices, chops and grills steak, chicken and seafood on a large steel grill right before your eyes.



Aloha Lanai Bar

A full bar offering an extensive wine and beer selection and cocktails including Mai Tai's, Surf Rider's and Polynesian's.



Gold Rush Saloon

Saddle up and wet your whistle at the Gold Rush Saloon, a full bar offering an extensive wine and beer selection and cocktails.



John Adams Coffee Bar

For that double, vanilla, extra hot latte with extra foam, the John Adams Coffee Bar is at your service with a wide variety of specialty coffees, teas, pastries and cookies.



Mardi Gras Cabaret Lounge & Nightclub

It's Mardi Gras every night at this New Orleans-inspired lounge and club. Order a round of your favorite beverage, grab your beads and dance the night away.



Napa Wine Bar

Enjoy different wines by the glass at the Napa Wine Bar. You can also order cocktails and beer in this full bar.



Pink's Champagne Bar

Inspired by Hawaii's Royal Palace Hotel, often referred to as the "Pink Palace", on Waikiki Beach. Toast to your good health and good luck with champagne.



Waikiki Bar

Hang loose brother at the Waikiki Bar. You'll think you're on Waikiki Beach after you order a Mai Tai or Polynesian. Full bar includes wine, beer and cocktails. Sand optional.

Activities

Seven shopping destinations • Mandara Spa & Salon • video arcade • basketball/volleyball • deck games • Hollywood Theater • jogging/walking track • Oasis Pool • fitness center • Shuffles Card Room • South Beach Pool

Inside Stateroom

With room for up to four guests, these staterooms are the most affordable way to cruise. They include two lower beds that convert into a queen-size bed and some feature additional bedding to accommodate up to two more.

Stateroom: 132-219 sq ft



Balcony Stateroom

With room for up to three guests, these staterooms include two lower beds that convert into a queen-size bed and some feature a convertible sofa to accommodate one more. Along with a sitting area, floor-to-ceiling glass doors and a private balcony offering great views. Plus some can connect so you can spread out yet stay together.

Stateroom: 178-285 sq ft Balcony: 40-61 sq ft



HAWAII CRUISE



To register online, visit:
www.stardestinations.com/travel-clubs
Password: corclubSD

Travel arrangements
provided by



February 21-March 3, 2024

PASSENGER INFORMATION (1st Traveler)

(Name must be written here as it appears on your government-issued ID)

First Name: _____

Middle Name(s): _____

Last Name(s): _____

Preferred Name: _____ Gender (circle one): M F

Address: _____

City: _____ State: _____ Zip: _____

Preferred Phone: _____

Email: _____

Date of Birth: ____/____/____
month / day / year

Dietary Needs: _____

Additional Special Requests/Needs: _____

Emergency Contact: _____

Relationship: _____

Emergency Contact's Phone: _____

PASSENGER INFORMATION (2nd Traveler)

(Name must be written here as it appears on your government-issued ID)

First Name: _____

Middle Name(s): _____

Last Name(s): _____

Preferred Name: _____ Gender (circle one): M F

Address: _____

City: _____ State: _____ Zip: _____

Preferred Phone: _____

Email: _____

Date of Birth: ____/____/____
month / day / year

Dietary Needs: _____

Additional Special Requests/Needs: _____

Emergency Contact: _____

Relationship: _____

Emergency Contact's Phone: _____

Sleeping Preference (circle one): Two Beds One Bed

Roommate (name): _____

CorTrust Bank RECOMMENDS all travelers purchase a Travel Protection Plan. For your convenience, we offer a Travel Protection Plan provided by Travelex Insurance Services.

- ☐ **Yes, I would like to purchase the offered plan.**
See the included Travelex Insurance Services flyer for pricing.
(Payment may be sent with your deposit or with final payment to CorTrust Bank)
- ☐ **No, I decline the offered plan.**

Travel Insurance is underwritten by Zurich American Insurance Company, (NAIC #16535). Any person who knowingly presents a false or fraudulent claim for payment of a loss or benefit or knowingly presents false information in an application for insurance is guilty of a crime and may be subject to fines and confinement in prison. To view state specific fraud warnings, visit: <https://www.travelexinsurance.com/company/fraud-warning>. Travelex Insurance Services Inc. ("Travelex Insurance") maintains an updated list of alerts and financial defaults on its website available at <https://www.travelexinsurance.com/customer-service/travel-alerts/travel-supplier>.

Travelex Insurance Services, Inc. CA Agency License #0D10209. Insurance coverages underwritten by individual member companies of Zurich in North America, including Zurich American Insurance Company (NAIC # 16535).

*** A Travel Protection Plan may be purchased any time before or with final payment to CorTrust Bank ***

Please choose a stateroom:

(Double Occupancy)
Trip Costs Per Person

- | | |
|---|----------------|
| <input type="checkbox"/> Inside Stateroom (132-219 sq ft - 4 available)* | \$6,089 |
| <input type="checkbox"/> Balcony Stateroom (178-285 sq ft - 23 available)* | \$6,909 |
- (Air allowance of \$1,100)

Single pricing subject to availability.

*Staterooms subject to availability at time of registration.

Pick-up Location: (please check one)

- ☐ Mitchell ☐ Coffee Cup Truck Stop (Vermillion exit)
- ☐ Sioux Falls

PLEASE TURN OVER FOR SIGNATURE

HAWAII CRUISE

DOCUMENTATION: A current government-issued photo ID is required for this trip. **Effective May 7, 2025: All travelers on domestic flights must have a Real ID-compliant form of identification to board. Driver's licenses with a star inside a gold circle in the upper corner are Real ID-compliant, as are passports. You can apply to get a compliant ID by visiting your local DMV.**

OPTIONAL TRAVEL PROTECTION PLAN: CorTrust Bank recommends that you purchase a Travel Protection Plan to help protect you and your travel investment against the unexpected so you can relax and enjoy your trip. Participants may purchase this coverage from the provider of your choice. For your convenience, we offer a Travel Protection Plan, 360° Group Premier provided by Travel Insurance Services, that helps provide coverage for trip cancellation/interruption, trip delay, baggage loss, theft or damage, medical expense and emergency evacuation coverage, and more. For more information, please see the product flyer included with this brochure. If you would like to purchase the offered plan, please check the applicable box on the registration form. **Please Note:** The plan cannot be purchased after final payment. To view/download the Policy, which provides the full coverage terms and details, including limitations and exclusions, go to: <https://policy.travelexinsurance.com/GPZ-1023>. To view state specific fraud warnings, visit: <https://www.travelexinsurance.com/company/fraud-warning>. The purchase of this product is not required in order to purchase any other travel product or service. Your travel retailer might not be licensed to sell travel insurance and will only be able to provide general information about the product. An unlicensed travel retailer may not answer questions about the terms and conditions of the insurance offered and may not evaluate the adequacy of your existing insurance coverage. The products being offered provide insurance coverage that only applies during your covered trip. You may have insurance coverage from other sources that provide similar benefits but may be subject to different restrictions depending upon the coverage. You may wish to compare the terms of the travel policy offered through Travel Insurance Services with any existing life, health, home, and automobile insurance policies you may have. If you have questions about your coverage under your existing insurance policies, contact your insurer or insurance agent or broker. Travel Insurance Services, Inc. CAAgency License #0D10209. Travel Insurance is offered on behalf of and under the direction of Travel Insurance Services. Insurance coverages underwritten by individual member companies of Zurich in North America, including Zurich American Insurance Company (NAIC # 16535).

CANCELLATION: Full refund of all monies is made if cancellation is received in writing to CorTrust Bank prior to final payment. A 100% fee is charged if the cancellation occurs between final payment and departure. If the reason for cancellation is due to a medical or other reason that is covered by Travel Protection, you may be eligible for reimbursement for such fees from your Travel Protection Plan provider.

TRAVELERS WITH SPECIAL NEEDS: You must advise Star Destinations, Inc. (SDI) at the time of registration of any disability requiring special attention. SDI will make reasonable efforts to accommodate the special needs of travelers. The Americans with Disabilities Act is applicable only in the U.S., and accommodations outside the U.S. may be more limited. Travelers requiring assistance are required to be accompanied by a companion who is capable of, and totally responsible for, providing the assistance. Neither SDI personnel nor its suppliers may lift or physically assist with travelers' special needs including, but not limited to, walking, dining, or other routine activities. Travelers thinking they may need assistance should call SDI to determine what accommodations may reasonably be provided. Arrangements at an additional cost are the financial responsibility of the traveler.

TERMS & CONDITIONS: Star Destinations, Inc. (SDI) acts as an agent for suppliers such as airlines, hotels or activities to provide you with the travel services and accommodations. Although great care is taken in choosing suppliers, we are unable to control them and therefore cannot be held responsible or liable for their acts or omissions. Should a contracted supplier be unable to perform required services, SDI reserves the right to substitute advertised services with similar services. SDI is not responsible for any claims, losses, damages, costs or expenses arising out of injury, accident or death, damage, loss, trip delay or delay of baggage, or other inconvenience resulting from mechanical breakdowns, fire, theft, civil disturbances, government actions, weather, and other factors beyond our control. In the case of a pandemic or worldwide disturbance that interrupts or cancels your planned tour, SDI will do everything possible to retrieve any refundable components of your tour but cannot be held responsible for any non-refundable portions of the tour. In addition, SDI reserves the right to vary the tour price advertised or printed to cover any increase in air fare, volatile fuel prices, government taxes and charges, exchange rate fluctuations, or other tour-related tariffs or newly announced travel costs. In the current travel environment, pricing may be increased due to unexpected requirements for health and safety of tour members. Due to infectious diseases, including COVID-19, destination areas may implement restrictions and requirements that may add additional costs beyond our control. Be aware that any public interaction carries a risk of exposure to infectious diseases. Travelers assume personal risk upon tour registration, and SDI cannot be held responsible in the event of infectious disease exposure. If you request a variation or change to your booking, SDI may choose to accept or reject that request. If accepted, you are responsible for any fees associated with it. If the minimum number of passengers required to operate the tour is not met, SDI reserves the right to cancel the tour.

It is the sole discretion of SDI to refuse transport to any passenger, or require any passenger to leave the tour, if it is reasonably believed that the passenger (1) is dangerous to others or to himself or herself; (2) is engaged in, or is threatening to engage in behavior that may adversely affect the safety, security, enjoyment, or well-being of other passengers, including behavior that is disruptive, verbally or physically abusive, obnoxious, harassing, or obscene; or (3) has failed or refused to follow SDI's rules and procedures or the instructions of its representatives. In the event a passenger is removed, such passenger may be left at any location without any liability to SDI or its representatives. SDI shall not be required to refund any portion of the price paid by any passenger who is removed, nor shall SDI be responsible for any further expenses incurred by the passenger. SDI shall be entitled to recover from the passenger any costs or expenses incurred by SDI or its representatives in the removal of the passenger or the exercise or enforcement of this clause.

A \$500 deposit per person is required with your registration form in order to reserve your spot.

FINAL PAYMENT IS DUE: OCTOBER 10, 2023

DEPOSIT PAYMENT INFORMATION:

Enclosed is my check, made payable to: CorTrust Bank

In the amount of: _____

Mail Check to: CorTrust Bank
719 N Main St, Mitchell, SD 57301

CREDIT CARD PAYMENTS:

(Please Note: The charge will appear on your statement as Star Destinations)

☐ Visa ☐ Mastercard In the amount of: _____

Credit Card Number: _____

Exp. Date: _____ / _____ Security Code: _____
month / year

Name as it appears on card: _____

By registering for this tour and signing below, **you acknowledge that CorTrust Bank reserves the right to refuse transport at any time to any passenger who does not meet the activity level requirements below.** Neither CorTrust Bank nor Star Destinations will be required to refund any portion of the price paid by any passenger who is removed in enforcement of this clause.

Activity Level: Minimal to Moderate

In order to participate in this tour, **you must:**

- Be able to walk/stand 2-3 hours at a time at an easy pace in all weather conditions
- Be able to maneuver some stairs, inclines, and uneven surfaces without assistance

Signature (1st Traveler): _____

Date: _____

Please initial to indicate you have read/agree to the terms and conditions: _____

If applicable:

United Airlines Frequent Flyer #: _____

KTN #: _____

Have you cruised with NCL in the past? ☐ YES ☐ NO

If yes, please include your Latitudes Rewards number (if known): _____

Signature (2nd Traveler): _____

Date: _____

Please initial to indicate you have read/agree to the terms and conditions: _____

If applicable:

United Airlines Frequent Flyer #: _____

KTN #: _____

Have you cruised with NCL in the past? ☐ YES ☐ NO

If yes, please include your Latitudes Rewards number (if known): _____

By registering for this trip, I agree to grant to Star Destinations and its authorized representatives permission to record on photography film and/or video, pictures of my participation. I further agree that any or all of the material photographed may be used, in any form, as part of any future publications, brochure, or other printed or digital materials used to promote Star Destinations, and further that such use shall be without payment of fees, royalties, special credit or other compensation.



Group tours are an exciting way to explore the world, and a Travelex travel protection plan can help ensure that you stay safe during your next tour. Our 360° Group Premier plan provides maximum travel protection for all ages at competitive group rates. Benefits include trip cancellation and interruption, emergency medical coverage, and 24/7 travel assistance services.



360° Group Premier | Group Travel Protection

Plan highlights

- Trip cancellation/interruption benefit includes:
 - Sickness, injury, or death¹
 - Inclement weather & natural disasters
 - Financial insolvency² & labor strike
 - Involuntary unemployment
- Primary coverage, no deductibles³
- Medical evacuation
- 5-hour travel delay benefit
- 3-hour missed connection benefit
- 12-hour baggage delay benefit
- Fast online claims⁴

360° Group Premier plan rates³

Trip cost	0-59	60-74	75+
\$0	\$36	\$47	\$64
\$1 - \$250	\$44	\$58	\$81
\$251 - \$500	\$57	\$74	\$105
\$501 - \$1,000	\$86	\$114	\$168
\$1,001 - \$1,500	\$109	\$143	\$211
\$1,501 - \$2,000	\$149	\$191	\$215
\$2,001 - \$2,500	\$191	\$245	\$277
\$2,501 - \$3,000	\$234	\$300	\$338
\$3,001 - \$3,500	\$276	\$354	\$400
\$3,501 - \$4,000	\$319	\$409	\$461
\$4,001 - \$4,500	\$361	\$463	\$523
\$4,501 - \$5,000	\$404	\$518	\$584
\$5,001 - \$5,500	\$446	\$572	\$646
\$5,501 - \$6,000	\$489	\$627	\$707
\$6,001 - \$6,500	\$531	\$681	\$769
\$6,501 - \$7,000	\$574	\$736	\$830
\$7,001 - \$8,000	\$638	\$818	\$923
\$8,001 - \$9,000	\$723	\$927	\$1,046
\$9,001 - \$10,000	\$808	\$1,036	\$1,169
\$10,001 - \$11,000	\$893	\$1,145	\$1,292
\$11,001 - \$12,000	\$978	\$1,254	\$1,415
\$12,001 - \$13,000	\$1,063	\$1,363	\$1,538
\$13,001 - \$14,000	\$1,148	\$1,472	\$1,661
\$14,001 - \$15,000	\$1,233	\$1,581	\$1,784
\$15,001 - \$16,000	\$1,318	\$1,690	\$1,907
\$16,001 - \$17,000	\$1,403	\$1,799	\$2,030
\$17,001 - \$18,000	\$1,488	\$1,908	\$2,153
\$18,001 - \$19,000	\$1,573	\$2,017	\$2,276
\$19,001 - \$20,000	\$1,658	\$2,126	\$2,399

360° Group Premier plan benefits³

Benefits	Coverage
Trip cancellation	100% of trip cost (up to \$20,000)
Trip interruption	150% of trip cost (up to \$30,000)
Trip interruption—return air only ⁵	\$1,000
Travel delay	\$1,000 (\$250/day)
Missed connection	\$1,000
Baggage & personal effects	\$1,500
Sporting equipment delay ³	\$600
Baggage delay	\$250
Emergency medical expenses ⁶	\$50,000
Emergency dental expenses ⁶	\$500
Emergency evacuation & repatriation	\$250,000
Accidental death & dismemberment	\$10,000
Travel assistance services ⁷	Included

¹Of you, a traveling companion, family member, or business partner. ²Coverage when plan is purchased at or before the final trip payment. ³All coverage per insured up to the limits listed. Pre-existing medical conditions waiver may vary by state. Coverages may vary and may not be available in all states. Please see the policy for details, or call +1.888.574.7026. Rates are subject to change. ⁴Based on industry average. Fastest payment on approved claims is based on electronic payment of claim. ⁵Coverage for trip interruption and trip interruption—return air only cannot be combined. ⁶\$50 deductible in CT, IN, KS, MO, MT, VT, and WA. ⁷Provided by the designated provider listed in the policy. 10.23 GRPFLY3





Questions about plan benefits?

Call +1.888.574.7026 and use Plan GPZ-1023, or email 360Group@travelexinsurance.com.

Trip cancellation & trip interruption

Protect travel investments and recover nonrefundable prepaid costs if your trip is canceled or interrupted for a covered reason. Popular covered reasons include:

- Sickness, injury, or death¹
- Residence or destination uninhabitable
- Strike
- Inclement weather
- Cancel for business reasons
- Traffic accident en route
- Quarantine
- Jury duty/subpoena
- Military duty
- Financial insolvency²
- Terrorist incident
- Theft of passport/visa
- Involuntary termination

Travel delay

Reimbursement for reasonable additional costs — such as accommodations, local transportation, and meals — if travel is delayed five hours or longer.

Baggage & personal effects

Reimbursement for personal articles and expenses if bags are lost, stolen, or damaged.

Baggage delay

Reimbursement for reasonable additional personal articles and expenses if bags are delayed for 12 hours or more.

Emergency medical & dental expenses⁶

Emergency medical treatment if sickness or injury occurs while traveling.

Emergency medical evacuation

Includes emergency medical evacuation to the nearest suitable medical facility, help returning home if medically necessary, and repatriation expenses.

Accidental death & dismemberment

Reimbursement for permanent loss of life, limbs, or sight from a covered accidental injury during travel.

Pre-existing medical condition exclusion waiver³

Pre-existing medical conditions are eligible for coverage when:

- The traveler is medically able to travel at the time of plan purchase
- The plan is purchased at or before the final trip payment

A pre-existing condition is an injury, sickness, or other condition (excluding any condition from which death ensues) of an insured, traveling companion, or family member traveling with the insured within the 60-day period immediately preceding the insured's plan purchase date.

Plan details

View policy at policy.travelexinsurance.com/GPZ-1023

STAR DESTINATIONS
LOCATION NUMBER: 15-0153

Unless otherwise stated in the plan, this plan will not pay for any loss arising directly or indirectly out of, or as a result of, or from, or that occur to, or are as a result of the actions of, the insured or the insured's family member, or traveling companion, or business partner for the following: suicide, attempted suicide, or intentionally self-inflicted injury, while sane or insane (while sane in CO and MO); mental, nervous, or psychological disorders; being under the influence of drugs or intoxicants, unless prescribed by a physician; normal pregnancy, resulting childbirth, and elective abortion; participation as a professional in athletics while on a covered trip; participation in organized amateur or interscholastic athletic or sports competition or related practice events; riding or driving in any motor competition; off-road driving, whether as a driver or as a passenger; declared or undeclared war, or any act of war; civil disorder; service in the armed forces of any country; nuclear reaction, radiation or radioactive contamination; operating or learning to operate any aircraft, as pilot or crew; mountain climbing, bungee jumping, snow skiing, skydiving, parachuting, free falling, cliff diving, B.A.S.E. or base jumping, hang gliding, parasailing, travel on any air-supported device other than on a regularly scheduled airline or air charter company, or extreme sports; mountaineering where ropes or guides are commonly used including ascending and descending a mountain requiring specialized equipment, including but not limited to anchors, bolts, carabiners, crampons, lead/top-rope anchoring equipment and pick-axes; scuba diving if the depth of the water exceeds 75 feet; the insured's commission of or attempt to commit a felony; elective medical or holistic treatment or procedures; failure of any tour operator, common carrier, other travel supplier, person or agency to provide the bargained-for travel arrangements/services; a loss that results from a sickness, disease, or other condition, event, or circumstance that occurs at a time when this policy is not in effect for the insured; a diagnosed sickness (if insurance is purchased after such diagnosis) from which no recovery is expected and that only palliative treatment is provided and that carries a prognosis of death within 12 months of the effective date of the applicable coverage under this policy; sickness, injury or death if the plan is purchased after entering a hospice facility or receiving hospice treatment; any trip taken outside the advice of a physician; or a pre-existing medical condition, including death, that results therefrom (within the stated look-back period within your insurance policy). Additionally, this plan will not pay for any loss arising directly or indirectly out of, or as a result of, or from, or that occur to, or are as a result of the actions of, the following that occur to the insured: any amount paid or payable under any worker's compensation, disability benefit or similar law; a loss or damage caused by detention, confiscation, or destruction by customs; or medical treatment during a covered trip, or arising from a covered trip undertaken for the purpose or intent of securing medical treatment. The following additional exclusion applies to accidental death and dismemberment benefits: We will not pay for loss caused by or resulting from sickness of any kind. Please refer to your plan documents for a complete list of plan exclusions and limitations, as well as the definitions of capitalized terms used herein. The purchase of this product is not required in order to purchase any other travel product or service. Your travel retailer might not be licensed to sell travel insurance and will only be able to provide general information about the product. An unlicensed travel retailer may not answer questions about the terms and conditions of the insurance offered and may not evaluate the adequacy of your existing insurance coverage. The products offered provide insurance coverage that only applies during your covered trip. You may have insurance coverage from other sources that provide similar benefits but may be subject to different restrictions depending on the coverage. You may wish to compare the terms of the travel policy offered through Travelex with any existing life, health, home, and automobile insurance policies you may have. If you have questions about your coverage under your existing insurance policies, contact your insurer or insurance agent or broker. Any inquiry regarding claims may be directed to Zurich Travel Assist at claims@zurichtravelassist.com, P.O. Box 968019, Schaumburg, IL 60196-8019; +1.800.501.4781. Inquiries regarding new, existing, or denied claims and any other claims questions may also be directed to this address. Consumers in California may also contact the California Department of Insurance Hotline +1.800.927.4357 or +1.213.897.8921. Travelex Insurance Services, Inc. CA Agency License #0D10209. Consumers in Maryland may contact the Maryland Insurance Administration +1.800.492.6116 or +1.410.468.2340. Insurance coverages underwritten by Zurich American Insurance Company, a New York domiciled company with its principal place of business at 1299 Zurich Way, Schaumburg, IL 60196 (NAIC # 16535). The terms and conditions of the policy described in this brief summary are governed by the individual policy document that contains the complete terms. In the event of any discrepancy between the information in this brief summary and the policy, the policy document shall govern. This is intended as a general description of certain types of insurance available to qualified customers, provided solely for informational purposes. Policy Form Series #U-TIIV-100-A CW, #U-TIIN-100/110-A CW, #U-TIGV-100-A CW, #U-TIGV-100-A DC, #U-TIIV-100-A DC & #U-TIGV-100-A DC; in IN #U-TIIN-100/110-A IN & U-TIGV-100-A IN; in KS #U-TIIN-110-A KS; in MN #U-TIIV-100-B MN & #U-TIGV-100-B MN; in MO #U-TIIN-110-A MO; in MT #U-TIIN-100/110 MT & U-TIGV-100-A CW; in NH #U-TIIV-100-A NH; #U-TIIV-101-B NY, #U-TIIN-100 NY; in OR #U-TIIV-100-A OR; in VA #U-TIIV-100-A VA and #U-TIGV-100-A VA; in VT #U-TIIN-100/110-A VT. 10.23 GRPFLY3



Dream. Explore. Travel On.